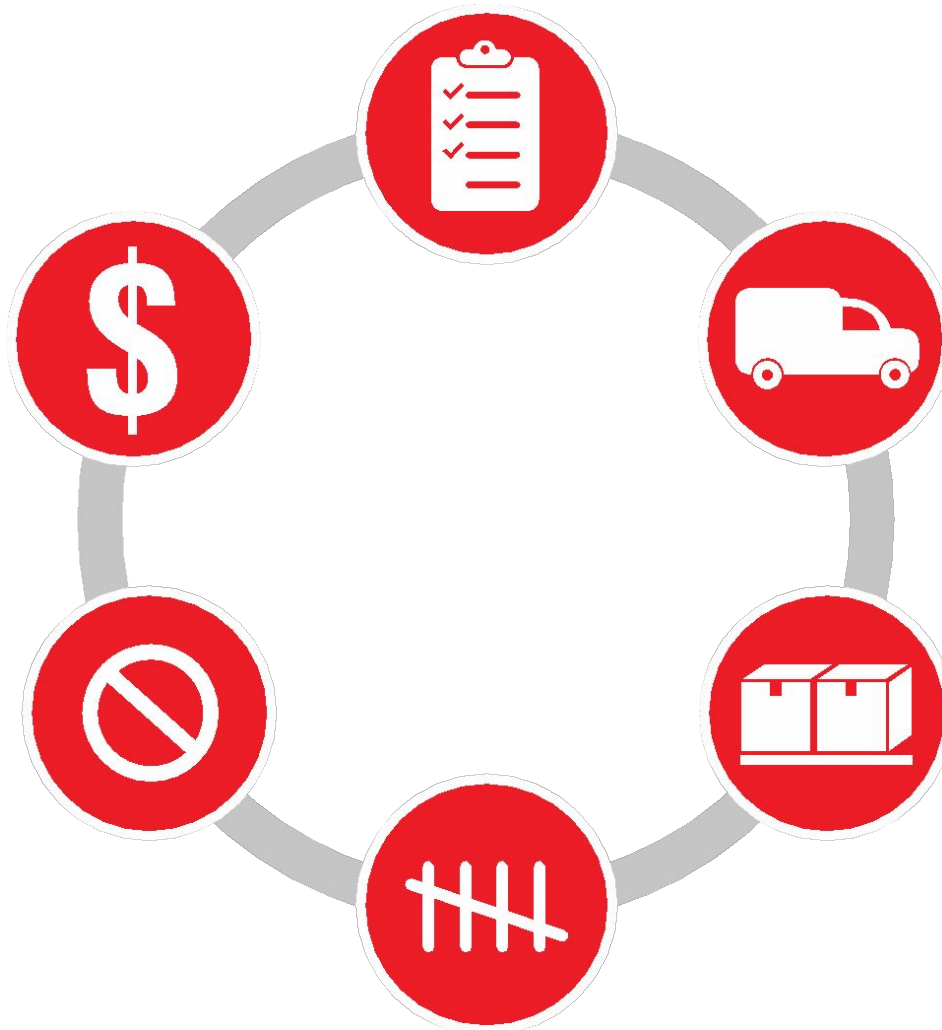




# Trainer's Toolbox

# Inventory Management: How You Can Help

# The Inventory Cycle Has Several Parts:



1. **Order Product**
2. **Delivery to Store**
3. **Placing it on the Shelf**
4. **Counting for Accuracy**
5. **Purging Slow Moving Inventory When Necessary**
6. **Or Selling the Product**



You can help maintain an accurate inventory count.





# Place items in their correct location.





# Fill empty shelves.





# Keep aisles organized.



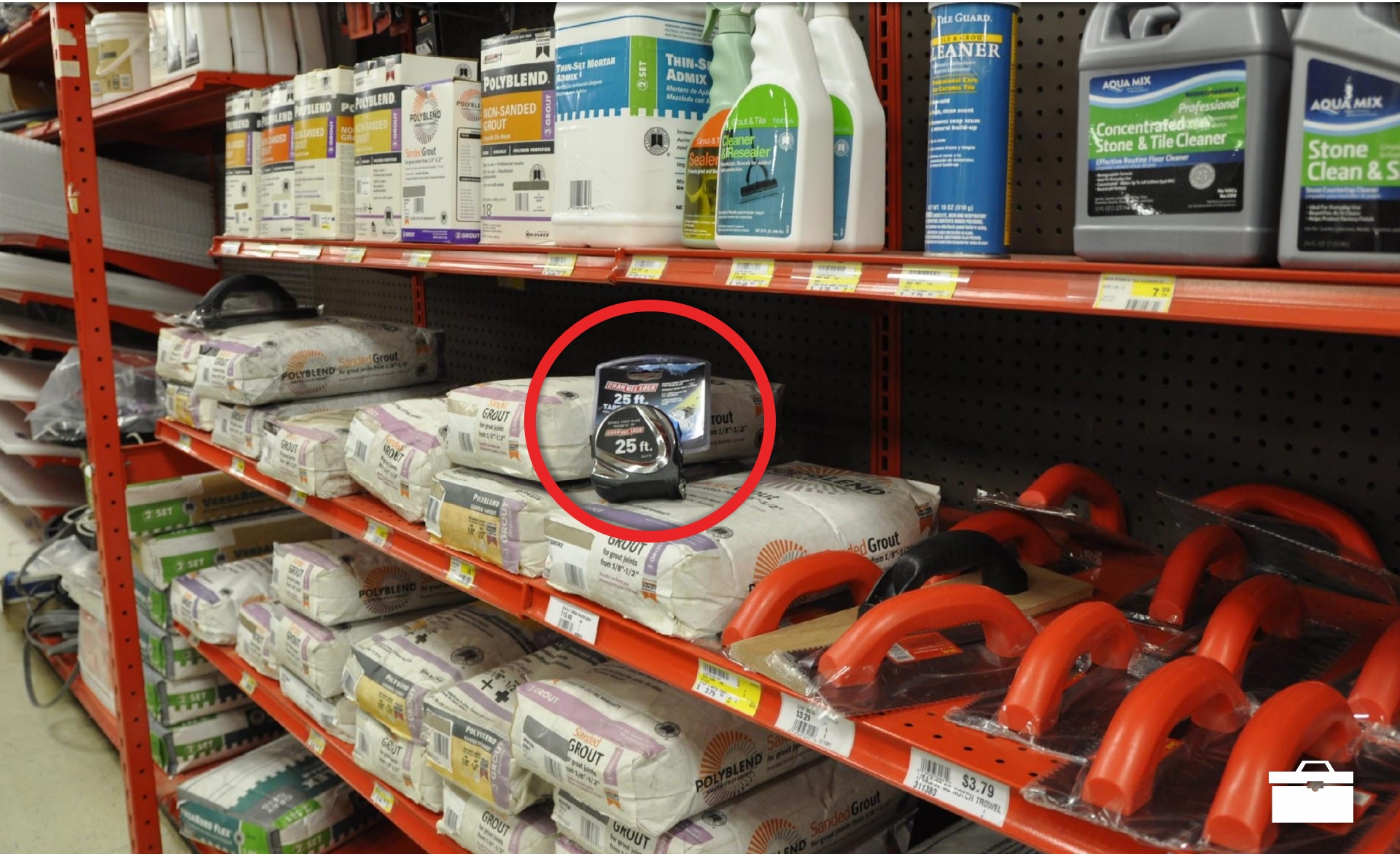


# Watch for theft.





# Watch for orphan items.





# Report damaged merchandise.





# Double check what you're scanning.





# Scan individual items.





# **Trainer's Toolbox**

# **Inventory Management: How You Can Help**